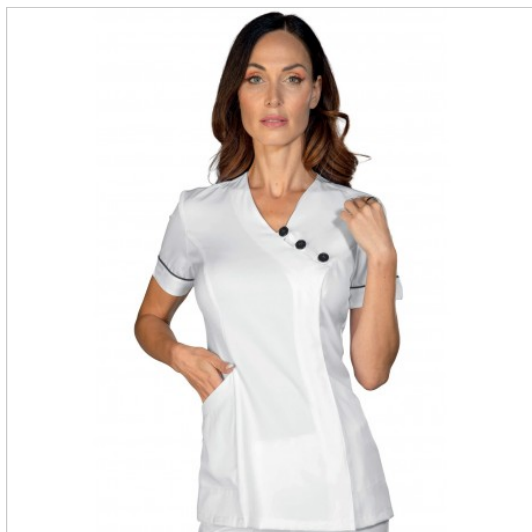


SCHEDA PRODOTTO



Tunic Ninive White and Black ISACCO 002310

Riferimento: ISA002310

Areas of Use	HEALTHCARE
	Beauty
Color	White
Composition Fabric	96% Polyester 4% Spandex
Design	Monochrome
Fabric Type	Stain-resistant
	Stretch
Fabric weight	145 gr/mq
Kind of Closure	With buttons and zipper
Kind of fit	Slim
Length	Short
Model	Woman
Number of Buttons	Three
Number of Pockets	Two
Product Line	Ninive
Product category	Tunics
Season	Summer
Secondary Color	Black
Type of Neck	V-Neck
Type of Sleeves	Short