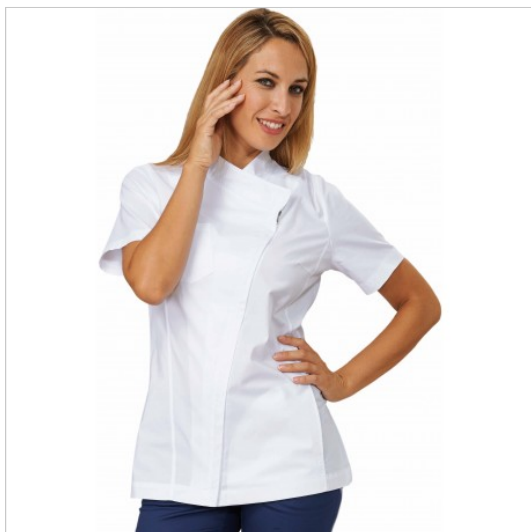


SCHEDA PRODOTTO



Tunic Cherry White Siggì

Riferimento: SIGCS1339/0001

Areas of Use	Beauty
Color	White
Composition Fabric	55% Cotton - 42% Polyester - 3% Elastan
Design	Monochrome
Fabric Type	Stretch
Fabric weight	160 gr/mq
Kind of Closure	with Zipper
Kind of fit	Slim
Length	Short
Model	Woman
Number of Pockets	Two
Product Line	Cherry
Product category	Short coats
Season	Summer
Type of Neck	Classic
Type of Sleeves	Short