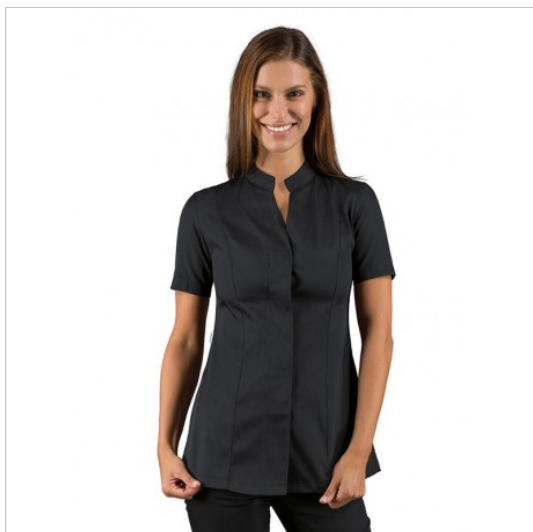


## SCHEDA PRODOTTO



Tunic HIBISCUS BOHEME Black 100% Polyester  
BOHÉME ISACCO 002661

Riferimento: ISA002661

Areas of Use	Beauty
Color	Black
Composition Fabric	100% Polyester Boheme
Design	Monochrome
Fabric Type	Non-iron
	Stretch
Fabric weight	180 gr/mq
Kind of Closure	Fixed buttons
Length	Short
Model	Woman
Number of Buttons	Five
Number of Pockets	Two
Product Line	Hibiscus
Product category	Short coats
Season	Summer
Type of Neck	Mandarin
Type of Sleeves	Short