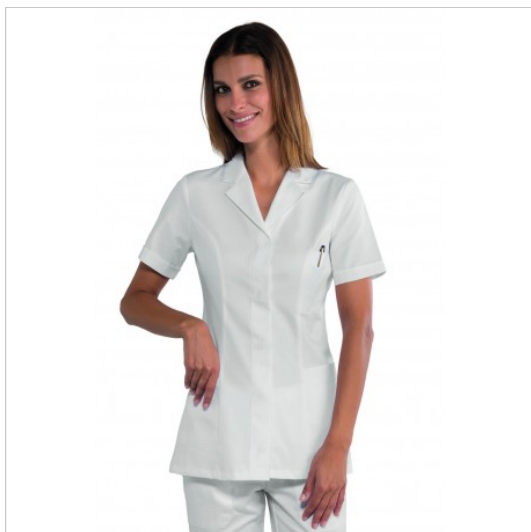


SCHEDA PRODOTTO



Tunic coimbrashort sleeveWhite extra light ISACCO
016220M

Riferimento: ISA016220M

Areas of Use	Beauty HEALTHCARE Food Industry
Color	White
Composition Fabric	65% Polyester 35% Cotton
Design	Monochrome
Fabric weight	150 gr/mq
Kind of Closure	Snaps
Length	Short
Model	Woman
Number of Buttons	Five
Number of Pockets	Three
Product Line	Coimbra
Product category	Short coats
Season	Summer
Type of Neck	Classic
Type of Sleeves	Short