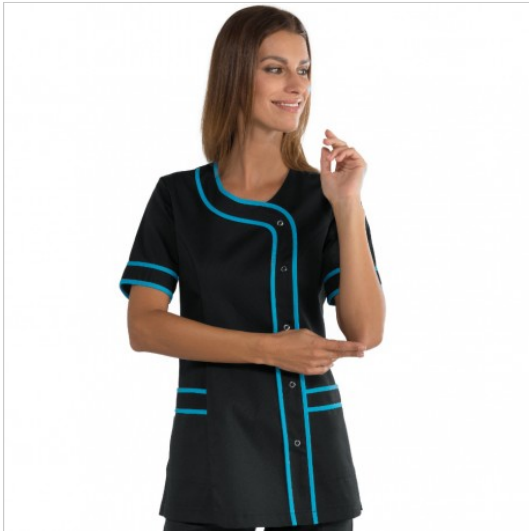


SCHEDA PRODOTTO



Tunic brasilia Black profiled Turquoise ISACCO
005810

Riferimento: ISA005810

Areas of Use	HEALTHCARE
	Beauty
Color	Black
Composition Fabric	65% Polyester 35% Cotton
Design	Monochrome
Fabric weight	195 gr/mq
Kind of Closure	Snaps
Length	Short
Model	Woman
Number of Buttons	Five
Number of Pockets	Two
Product Line	Brasilia
Product category	Short coats
Season	Summer
Secondary Color	Turquoise
Type of Neck	Crew neck
Type of Sleeves	Short