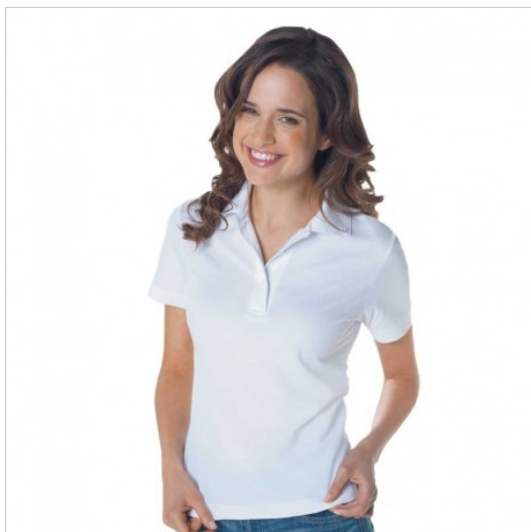


SCHEDA PRODOTTO



Polo regular lady White

Riferimento: BASPOPL200/WH

Areas of Use	Various
Color	White
Composition Fabric	100% Cotton
Design	Monochrome
Fabric weight	200 gr/mq
Kind of fit	Slim
Model	Woman
Number of Buttons	Three
Product Line	JHK POPL200
Product category	Polo
Season	Summer
Special Sizes	Big Size
Type of Neck	Polo
Type of Sleeves	Short