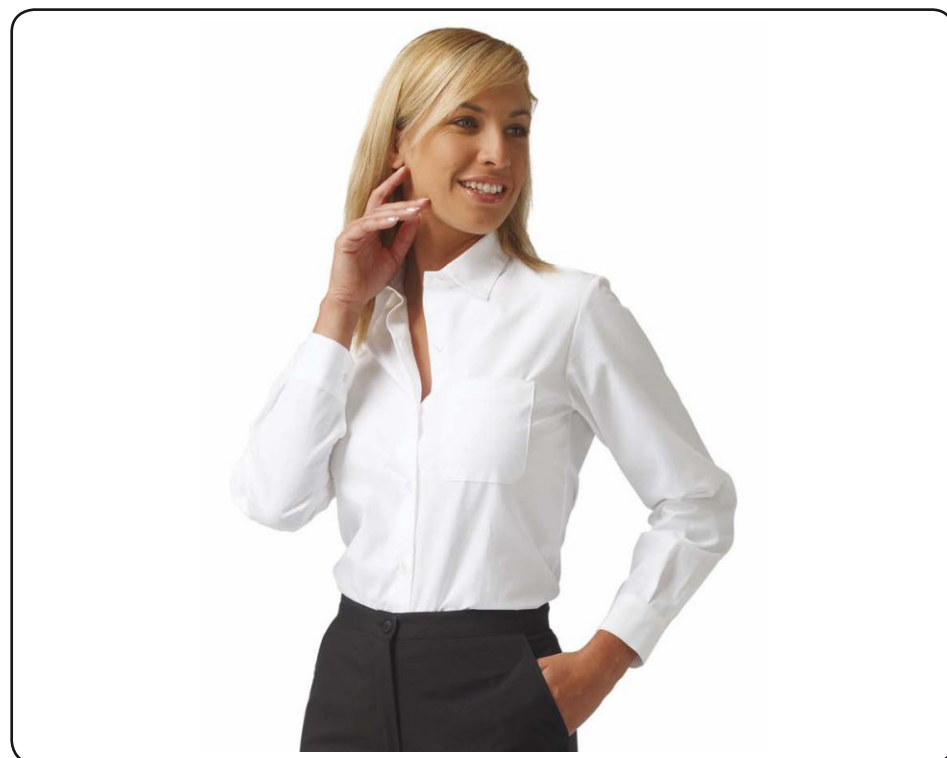


CAMICIA M/L MARTA

HORECA / HORECA

SHIRT



CODICE / CODE

28CM0163/00-9000

TESSUTO PRINCIPALE / MAIN FABRIC

100% COTONE GR/MQ. 120
100% COTTON GR/MQ. 120

GAMMA TAGLIE / SIZE RANGE

XS-3XL

CERTIFICAZIONI / CERTIFICATION

CE UNI EN ISO 13688

MANUTENZIONE / MAINTENANCE



VARIANTI COLORI / COLOR VARIANTS

0001

DESCRIZIONE / DESCRIPTION:

- Abbottonatura con bottoni e occhielli
- Taschino sul davanti sinistro
- Maniche lunghe a giro
- Polsi con bottone.

- Closure with buttons and relative buttholes
- Small pocket on the left
- Long sleeves
- Cuffs with buttons.

	XS	S	M	L	XL	XXL	4XL	5XL	Tol. ±
BB lunghezza totale TOTAL LENGTH	64.00	65.00	67.00	69.00	70.00	70.50	71.50	72.00	1
CA lunghezza manica SLEEVE LENGTH	58.50	59.00	60.00	61.00	62.00	63.00	64.00	64.00	1
DA meta' circonferenza torace CHEST HALF CIRCUMFERENCE	43.00	45.00	49.00	53.00	57.00	61.00	69.00	73.00	1

